

**SPECIAL ISSUE**

*Mombasa County Gazette Supplement No. 3 (Bills No. 3)*



NATIONAL COUNCIL FOR  
LAW REPORTING  
LIBRARY

REPUBLIC OF KENYA

---

**MOMBASA COUNTY GAZETTE  
SUPPLEMENT**

**BILLS, 2014**

---

---

**NAIROBI, 10th June, 2014**

---

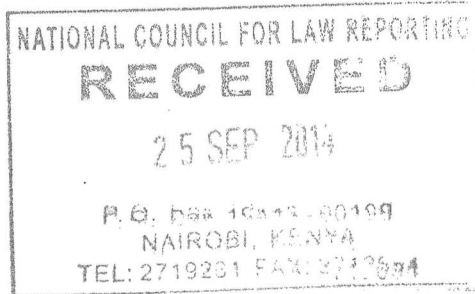
---

CONTENT

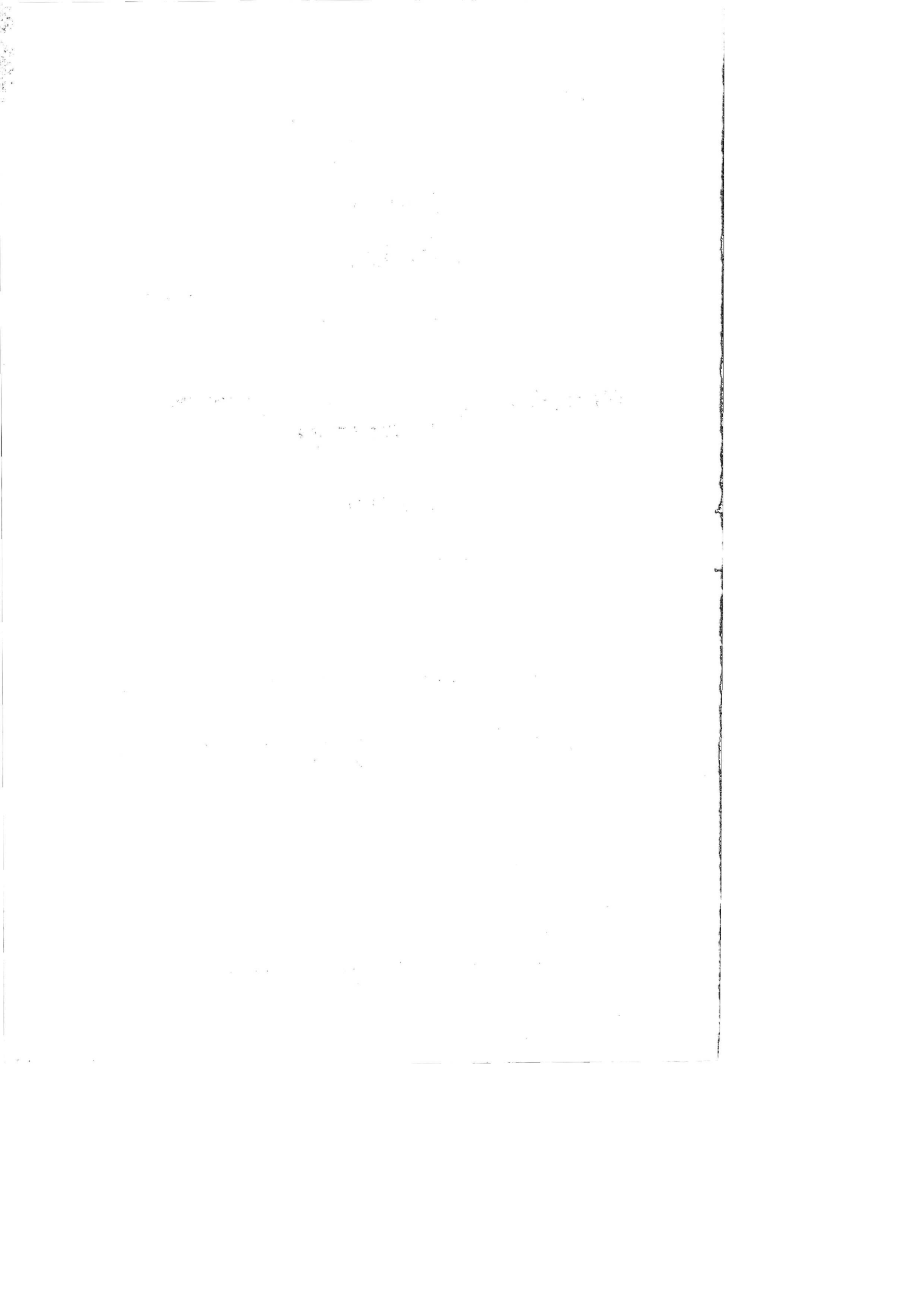
Bill for Introduction into the Mombasa County Assembly—

PAGE

The Mombasa County Liquor Licensing Bill, 2014..... 37



PRINTED AND PUBLISHED BY THE GOVERNMENT PRINTER, NAIROBI



**THE MOMBASA COUNTY LIQUOR LICENCING BILL, 2014**

**ARRANGEMENT OF SECTIONS**

**PART I—PRELIMINARY**

*Clauses*

- 1—Short title and commencement
- 2—Interpretation
- 3—Objects and purposes

**PART II—ADMINISTRATION OF LIQUOR CONTROL**

- 4—Establishment of a Directorate
- 5—Appointment and qualifications of Director and members
- 6—Functions of the Directorate
- 7—Powers of the Directorate
- 8—Oath or affirmation of office
- 9—Committees of Directorate
- 10—Term of office
- 11—Remuneration
- 12—Removal from office
- 13—Vacation of office
- 14—Filling of Vacancy
- 15—Secretary
- 16—Removal of Secretary
- 17—Meetings
- 18—Employees of the Directorate
- 19—County Liquor Licensing Review Committee
- 20—Protection from personal liability
- 21—Establishment of the Fund
- 22—Administration of the Fund

**PART III—LICENSING PROVISIONS**

- 23—Control of alcoholic drinks
- 24—Application for licence
- 25—Objection to an application for a license
- 26—Consideration of an application
- 27—Grant of a licence
- 28—Provisional licence
- 29—Persons not eligible for a licence

- 30—Validity and renewal of licences
- 31—Licences to body corporate
- 32—Types of licences
- 33—Transfer of licence
- 34—Renewal of licence
- 35—Licence to be displayed
- 36—Reports by medical officers and police officers
- 37—Cancellation of licence

#### **PART IV—OFFENCES**

- 38—Employment of underage persons in sale of alcoholic drinks
- 39—Obstruction
- 40—General Penalty
- 41—Nature of offences

#### **PART V—MISCALLENEOUS PROVISIONS**

- 42—Regulations
- 39—Savings

#### **SCHEDULE—TYPE OF LICENCES**