

SPECIAL ISSUE

Kenya Gazette Supplement No. 61 (National Assembly Bills No. 22)



REPUBLIC OF KENYA

KENYA GAZETTE SUPPLEMENT

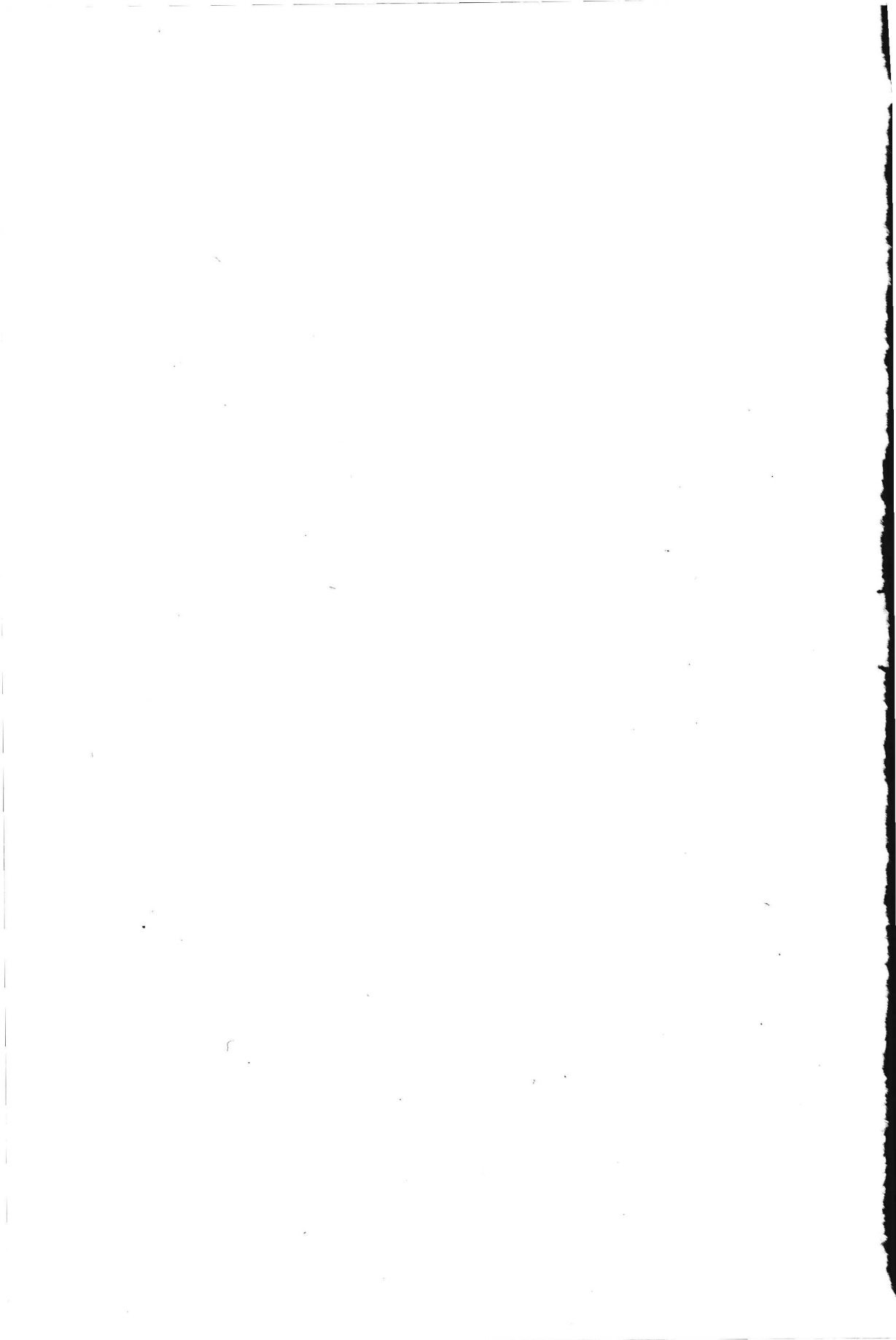
NATIONAL ASSEMBLY BILLS, 2014

NAIROBI, 22nd April, 2014

CONTENT

Bill for Introduction into the National Assembly—

	PAGE
The Mental Health Bill, 2014	2523



THE MENTAL HEALTH BILL, 2014
ARRANGEMENT OF CLAUSES

Clause

PART I—PRELIMINARY

- 1—Short title.
- 2—Interpretation.
- 3—Objects and purposes of the Act.

PART II—ACCESS TO MENTAL HEALTH CARE

- 4—Cost, accessibility, etc. of health services.
- 5—Quality of health services.
- 6—Responsibility of national and county governments.
- 7—Counselling and aftercare services.
- 8—Promotion of community mental health care.
- 9—Mental health interventions in primary care.
- 10—Access to medication and psychosocial interventions.
- 11—Access to medical insurance.

PART III—DETERMINATION OF MENTAL ILLNESS

- 12—Determination of mental illness.
- 13—Principles for determination of mental illness.
- 14—Determination by medical practitioner.

**PART IV—RIGHTS OF PERSONS WITH MENTAL ILLNESS
AND DUTIES OF MENTAL HEALTH CARE PROVIDERS**

- 15—Right to mental health services.
- 16—Protection from discrimination.
- 17—Legal capacity.
- 18—Consent to treatment.
- 19—Access to information.
- 20—Confidentiality of information.
- 21—Disclosure of confidential information.
- 22—Conditions at mental health care facilities.

- 23—Persons not to be subjected to forced labour.
- 24—Protection against abuse and cruel and degrading treatment.
- 25—Person to be informed of rights.
- 26—Rights of families and carers of persons with mental illness.
- 27—Best practices.
- 28—Right to representation.
- 29—Right to participate in treatment planning.

PART V—PROVISIONS ON ADMISSION AND TREATMENT

- 30—Voluntary admission.
- 31—Informed consent.
- 32—Involuntary admission.
- 33—Emergency admission and treatment.
- 34—Considerations for emergency cases.
- 35—Duration of emergency treatment.

PART VI—MENTALLY ILL OFFENDERS

- 36—Facilities for mentally ill offenders.

PART VII—SECLUSION AND RESTRAINT

- 37—Seclusion or restraint to be in accordance with the law.
- 38—Conditions for restraint or seclusion.

PART VIII—REVIEW, APPEALS, DISCHARGE AND TRANSFER OF PERSON WITH MENTAL ILLNESS

- 39—Review of mental health status.
- 40—Appeals.
- 41—Discharge of person with mental illness.
- 42—Transfer of person with mental illness.

PART IX—CARE AND ADMINISTRATION OF PROPERTY OF PERSONS WITH MENTAL ILLNESS

- 43—Application for administration.
- 44—Receipt of evidence.
- 45—Order for administration.
- 46—Duties of a manager.